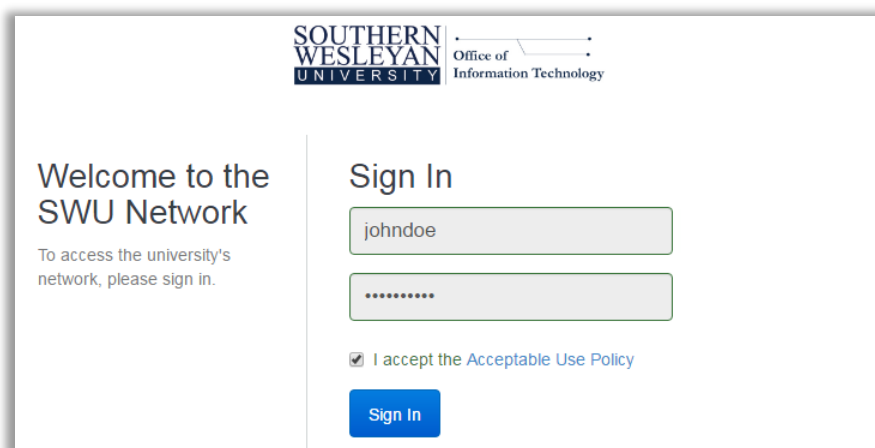


## Logging into SWU's Network

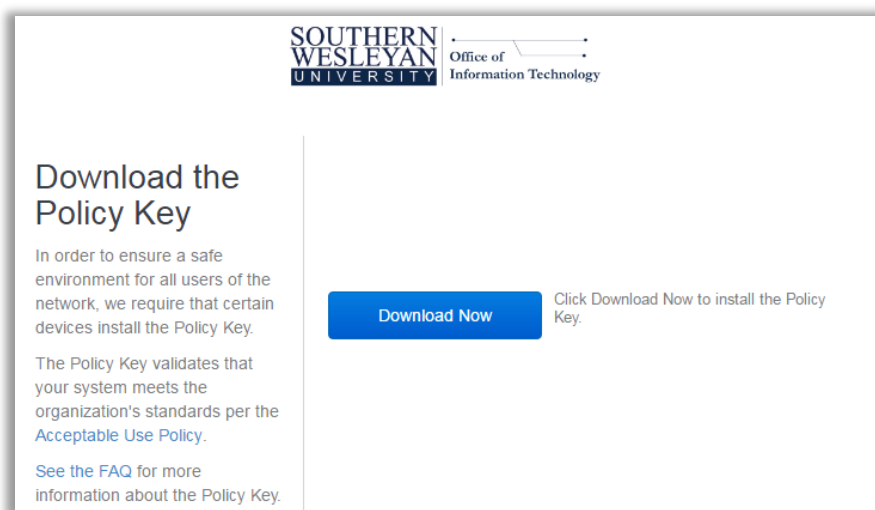
*If your network settings show that you are "Connected to SWU" but you still cannot access internet browsing...*

1. Type `-10.0.80.1-` into the URL bar on your Internet Browser. When you see this window below, ensure that you are signed in with your username, password, and have accepted the Usage Policy.



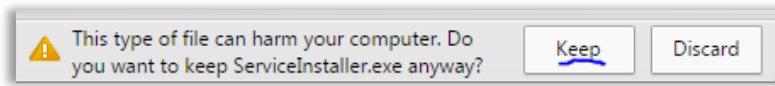
The screenshot shows the 'Sign In' page for the Southern Wesleyan University network. At the top, the Southern Wesleyan University logo and 'Office of Information Technology' are displayed. The page is split into two columns. The left column contains the heading 'Welcome to the SWU Network' and the text 'To access the university's network, please sign in.' The right column contains the heading 'Sign In', a text input field with 'johndoe', a password input field with masked characters, a checkbox labeled 'I accept the Acceptable Use Policy', and a blue 'Sign In' button.

2. Select `-Download Now-`.

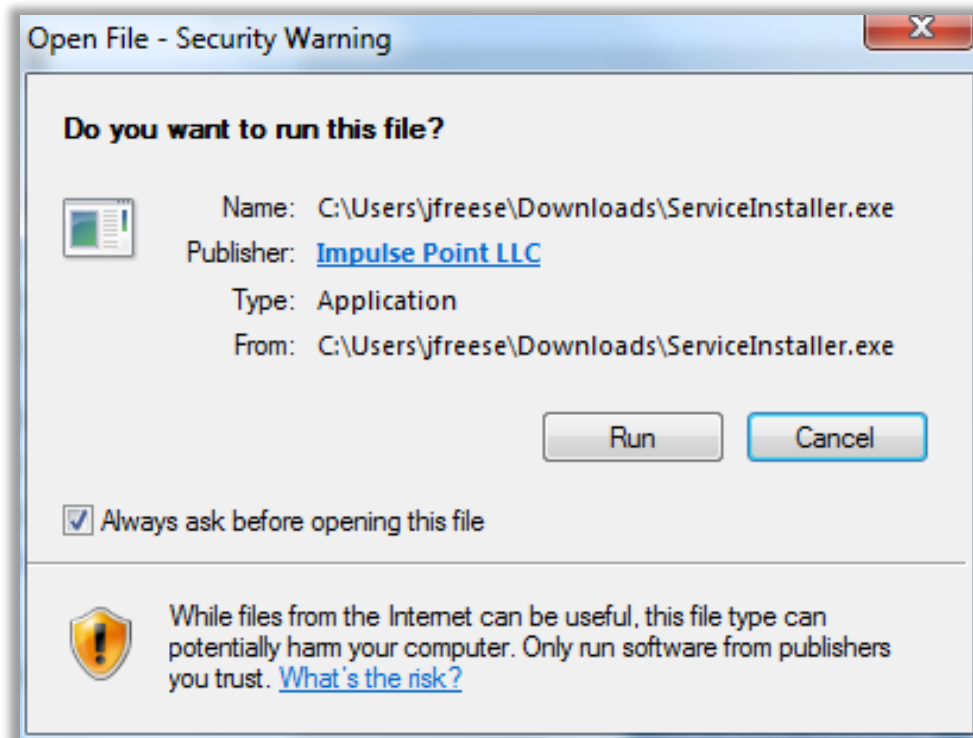


The screenshot shows the 'Download the Policy Key' page. At the top, the Southern Wesleyan University logo and 'Office of Information Technology' are displayed. The page is split into two columns. The left column contains the heading 'Download the Policy Key', the text 'In order to ensure a safe environment for all users of the network, we require that certain devices install the Policy Key.', and further text explaining the Policy Key's purpose and a link to the FAQ. The right column contains a blue 'Download Now' button and the text 'Click Download Now to install the Policy Key.'

3. Keep the file.

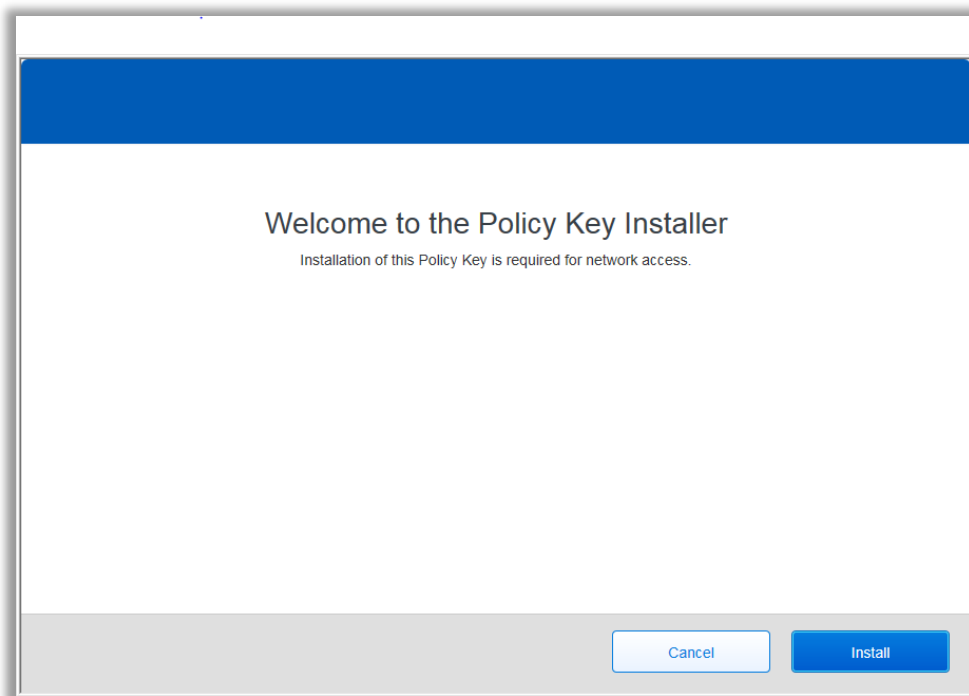


4. Run the file.

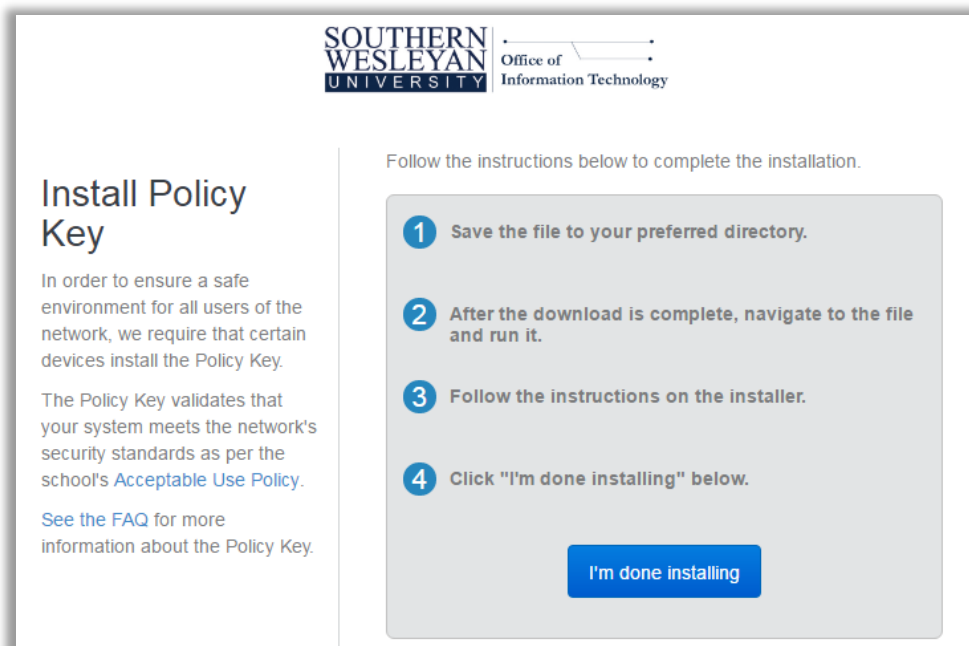


|| Continue to Page 3 ||

## 5. Install the Policy Key.



## 6. Select **-I'm done installing-** once the installation is complete.



7. If you then type in `-10.0.80.1-` into your browser again and you can view the `swu.edu` home page, then you have accessed the SWU Network and can begin browsing.

