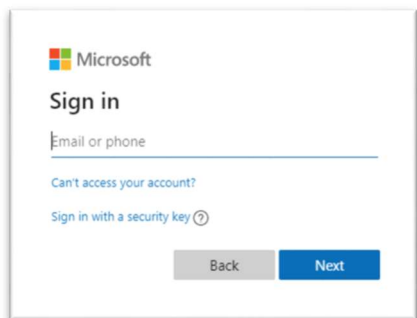


DOWNLOADING OFFICE 2016 THROUGH OFFICE 365 PRO PLUS

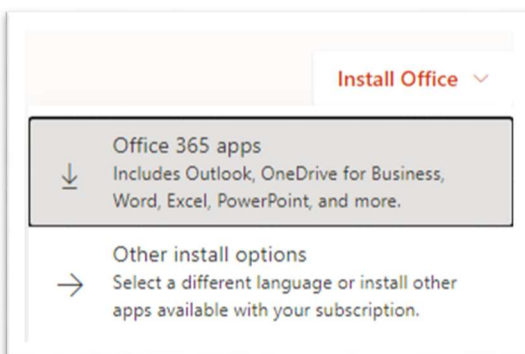
TO DOWNLOAD WORD, OUTLOOK, EXCEL... FREE.

OCT 2020 // INFORMATION TECHNOLOGY

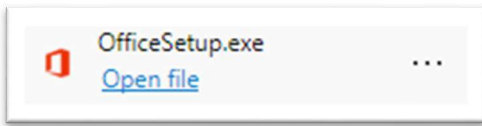
Sign in to - Office 365 - with your school issued email (ex. FullName@mail.swu.edu) and password.



In the top right corner, select – Install Office 2016.

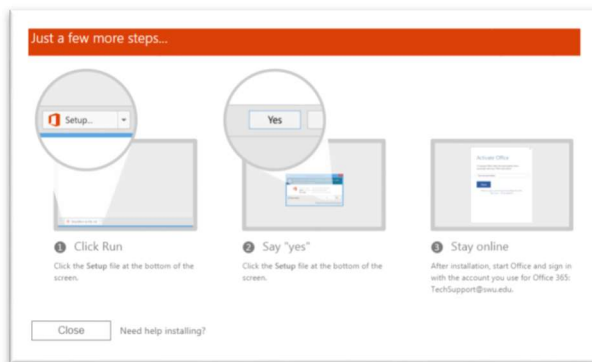


Select the Office 365 download – Setup – in the bottom left of the browser page.



Run the installation of Office 365 using your system's automated cues.

The bandwidth available at the time of the install will greatly affect the length of time required for the install.



Click – Close – when an Office welcome screen is displayed.

